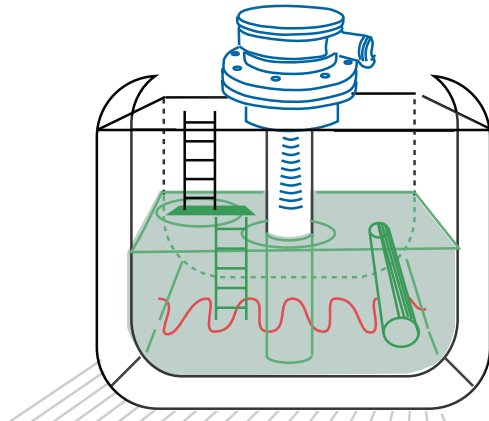


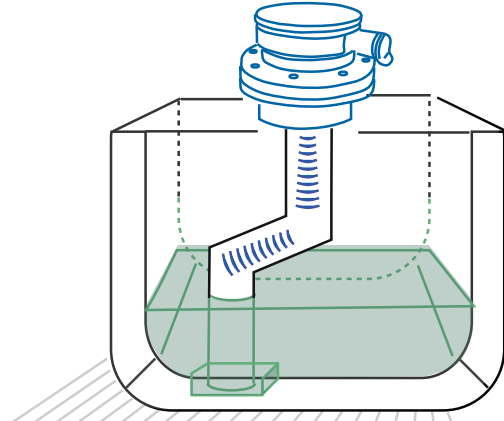
Advantages of GLFW™

(Guided Low Frequency Waveguide)

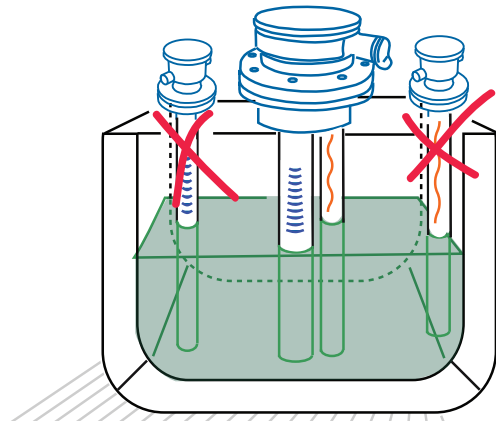
method of level measurement in cargo tanks



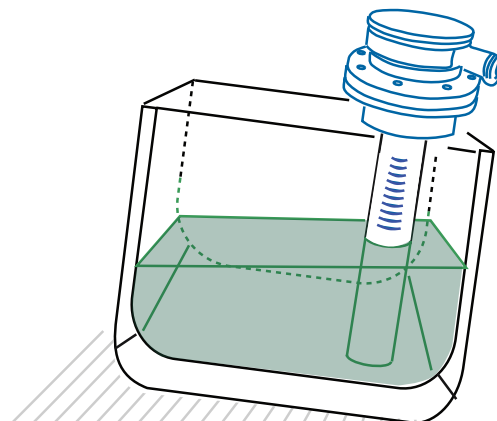
Wave emission is localized inside the waveguide. There is no disturbance from the ladders, heating pipelines and other equipment inside the tank.



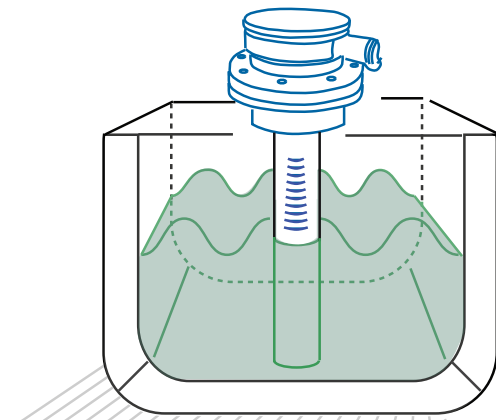
The waveguide can be bent and inserted into the pump well for dry tank cleaning.



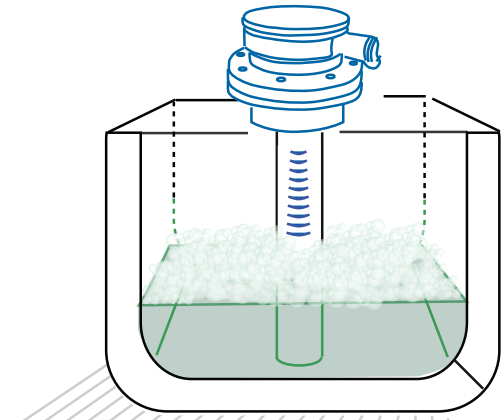
Number of sensors and port holes on the deck are reduced by placing a thermowell next to the waveguide.



TGD can be installed near the aft bulkhead for level gauging when vessel is down by the stern.



During loading/unloading, when the turbulence is high, reflection from the surface inside the waveguide remains stable.



Measurement accuracy is not affected by the foam formation.



With state-of-the-art technology we bring efficiency to our customers

API Marine is a house of competence, where development, design and production processes are united in unique solutions for advanced tank control. Entire liquid cargo control systems can be supplied - from sensors in the tank and operators' stations to the calculation software, all fulfilling IMO requirements. API Marine is certified according to ISO 9001 and our products carry the ATEX PQAN approval.

We set new standards for tank measuring technology by bringing proven measurement technologies of the 21 century into use on tank installations within marine and industry. The unique state-of-the-art patented methods provide an outstanding level of accuracy and reliability in tank measurements providing onboard safety and efficiency.

The world's first gas carrier being build in accordance with the IMO Green Passport will have API Marine tank technology onboard. Also tankers being build for operations in arctic areas will carry our solutions designed for operations in any type of liquid and at any temperature.

We want to contribute to our customer's profitability supplying high quality products, excellent service and state-of-the-art high-tech solutions, where reliability and durability are key-words!

